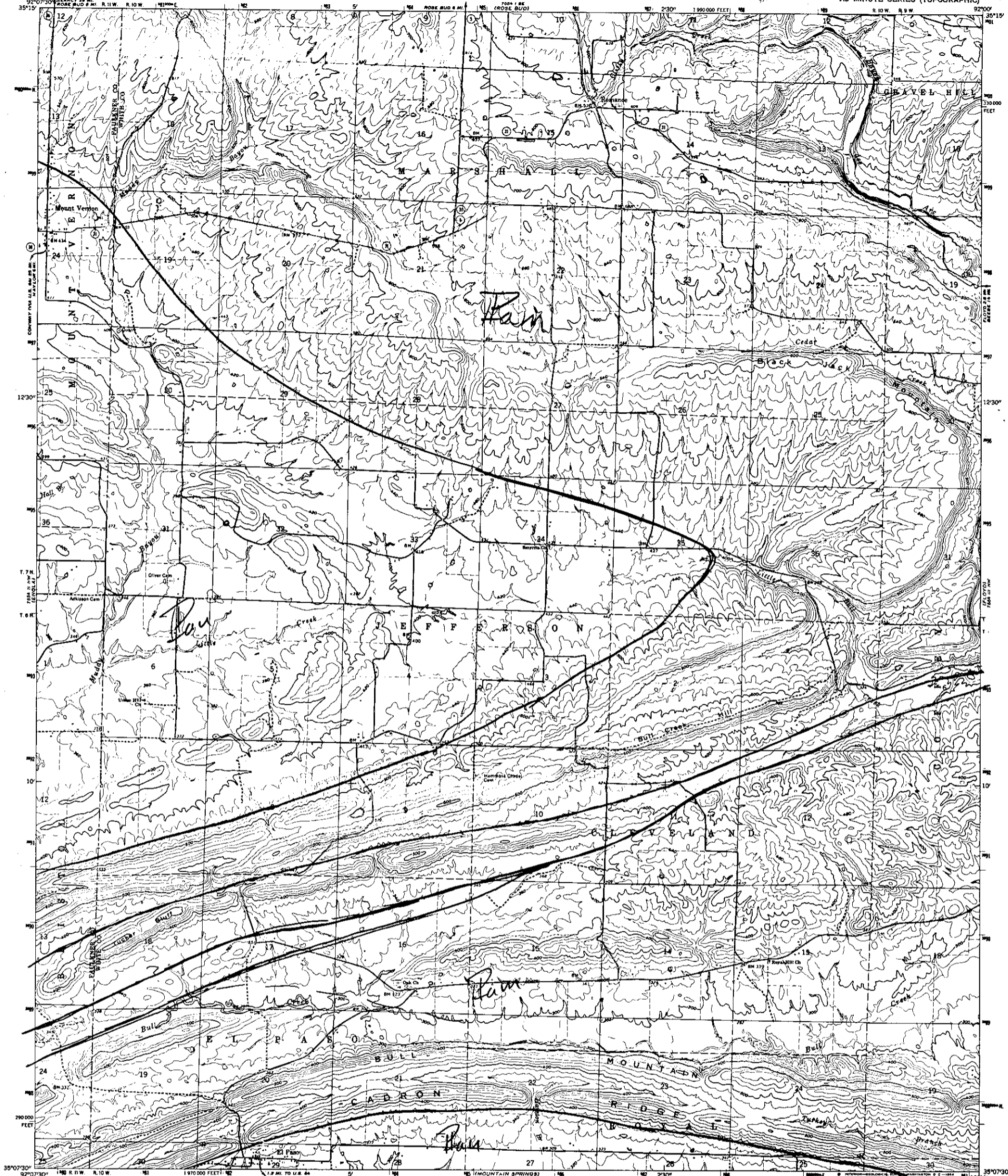


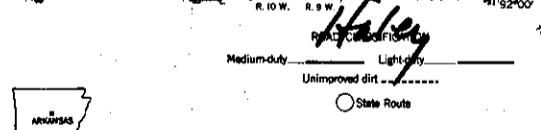
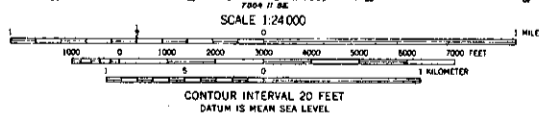
UNITED STATES
DEPARTMENT OF THE INTERIOR
GEOLOGICAL SURVEY

MOUNT VERNON QUADRANGLE
ARKANSAS
7.5 MINUTE SERIES (TOPOGRAPHIC)

3142
27 28 11
15 16 17 18 19 20



Mapped, edited, and published by the Geological Survey
Control by USGS, USC&S, and USCE
Topography by photogrammetric methods from aerial
photographs taken 1960. Field checked 1963
Polyconic projection. 1927 North American datum
10,000-foot grid based on Arkansas coordinate system, north zone
1000-meter Universal Transverse Mercator grid ticks,
zone 15, shown in blue
Fine red dashed lines indicate selected fence and field lines where
generally visible on aerial photographs. This information is unchecked



THIS MAP COMPLIES WITH NATIONAL MAP ACCURACY STANDARDS
FOR SALE BY U. S. GEOLOGICAL SURVEY, DENVER 25, COLORADO OR WASHINGTON 25, D. C.
AND BY THE ARKANSAS GEOLOGICAL COMMISSION, LITTLE ROCK, ARKANSAS
A FOLDER DESCRIBING TOPOGRAPHIC MAPS AND SYMBOLS IS AVAILABLE ON REQUEST

MOUNT VERNON, ARK.
N3507.5-W9200/7.5
1963
AMB 7554 11 NE-SERIES Y884

MASTER COPY

3